

# POLIVAC

INTERNATIONAL PTY LTD



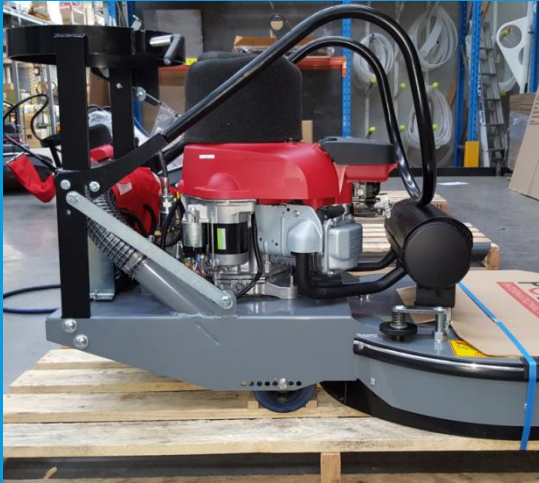
## GAZ20 / GAZ24

### INSTRUCTION MANUAL

# MODELS



# UNPACKING THE MACHINE



1. Remove from pallet
2. Undo handle bolts and return to operating position.
3. Reconnect bolts when handle is in position
4. Re-attach dust bag to handle.

# SAFETY

## Important notice

For safety reasons it is important you read this safety awareness manual prior to operating your LPG power product.



## L.P.G Safety Awareness Manual

This Safety/Training Manual has been developed to encourage safe working habits of those Using engine powered equipment fuelled by Liquefied Propane Gas (LPG).

Please be reminded, this manual is *not* designed to instruct you on how to maintain floors, But is designed to instruct you on how to avoid incidents that could be brought on by unsafe Actions, poor maintenance and the lack of accurate knowledge.

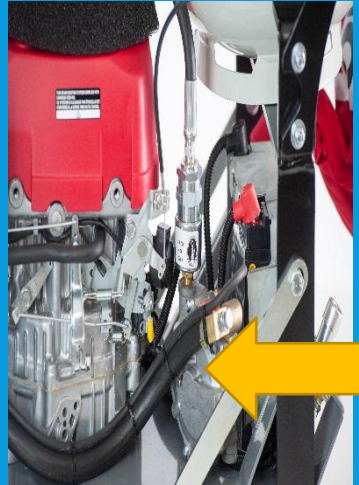
# READY TO USE



- Place the gas bottle into the holder on the machine with the outlet facing forward.
- Tighten the handle to hold the bottle in place.
- Connect the machine hose to the gas bottle.
- To release the gas turn the knob on the gas bottle.
- Before starting you should check the oil level to prevent unnecessary damage to your machine.
- When starting the machine, move the throttle lever to the off position.
- You should always start the machine with the pad off the surface, this done by pushing down on the handle.



# READY TO USE



- In certain environments, you may need to prime the gas regulator, this is done by pressing the primer button on the outside of the regulator.
- To start press the start button located the battery with you foot, hold until engine start running, then release.
- Once running in idle, you now need push the throttle cable to the on position your machine is now at full throttle and ready to use.
- Lift the handle placing the pad on the floor, now you are ready to polish.
- Once finished lift the head from off the floor, return the throttle to the off position and close the gas bottle valve, waiting the engine stops. Now your machine safe to store



# HOW TO USE

- Prepare your safety equipment.
- Plan the work Path. Clear obstacles from in you path .
- The gazzo/gazz4 burnishers work in a straight line , just walk slowly forward then complete a u-turn walk back overlapping the previous pass sufficiently , to give a uniform finish.
- Important note !! Keep the machine moving at all times to prevent burning the floor.



# BATTERY MAINTENANCE

If you plan to leave the machine unused for a considerable period of time, disconnect the earth terminal on the battery to prevent battery discharge.



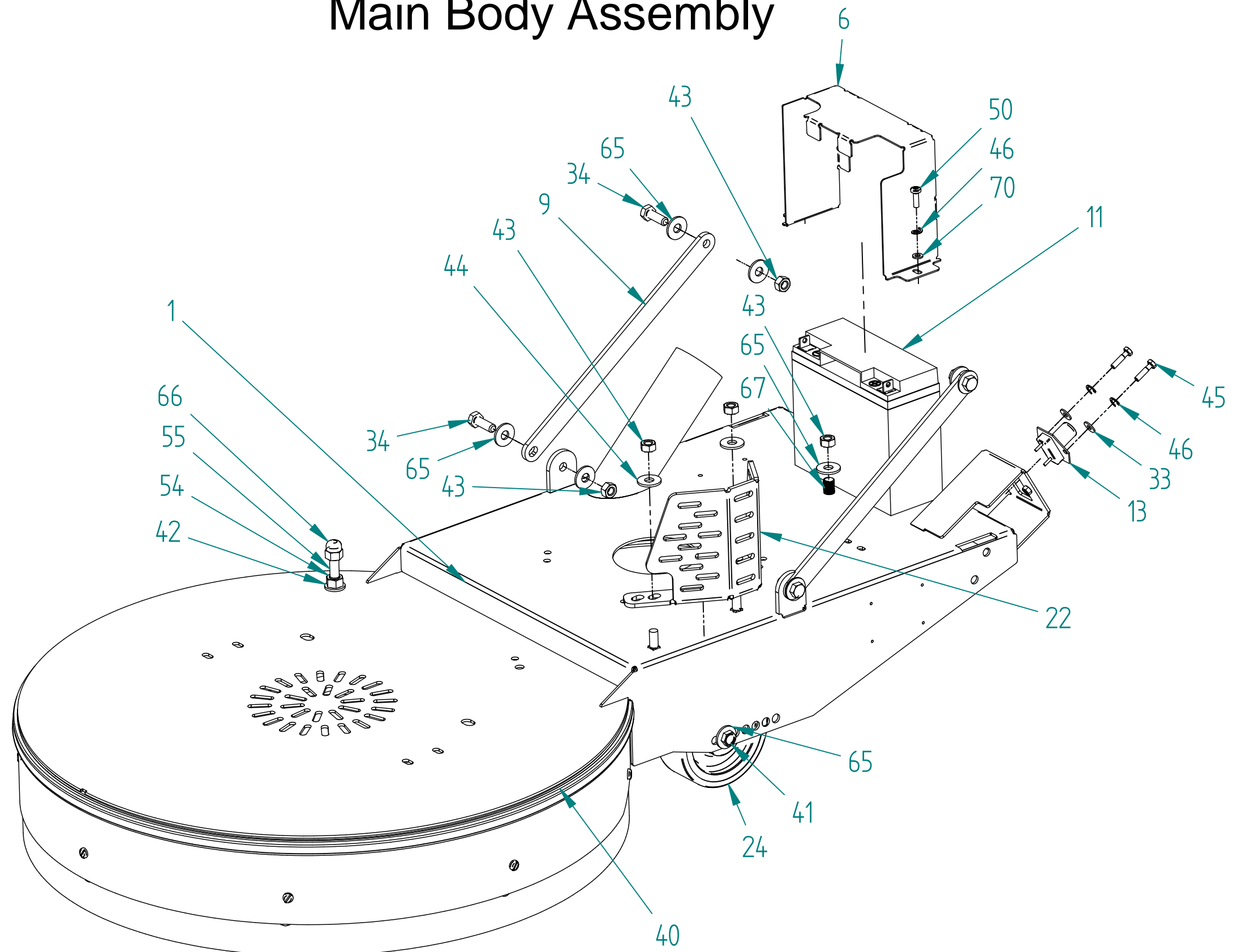


# WARRANTY

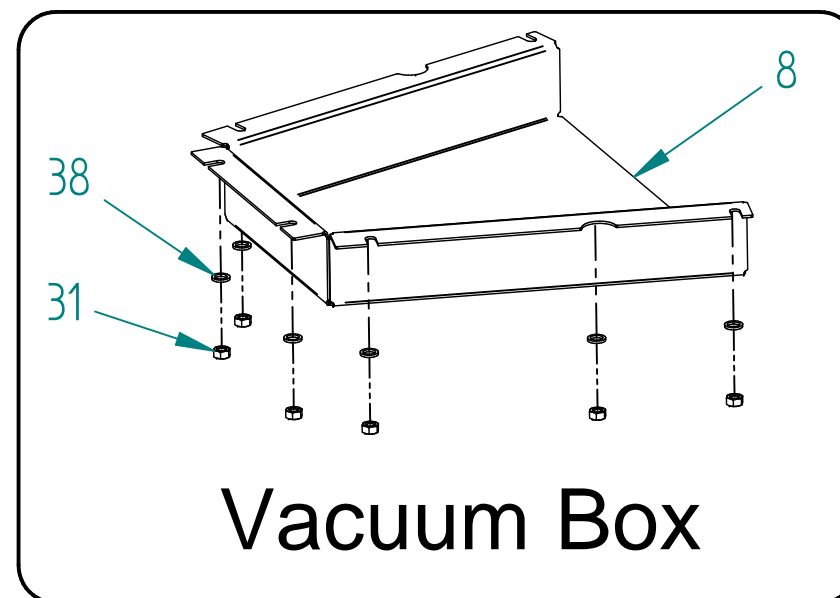
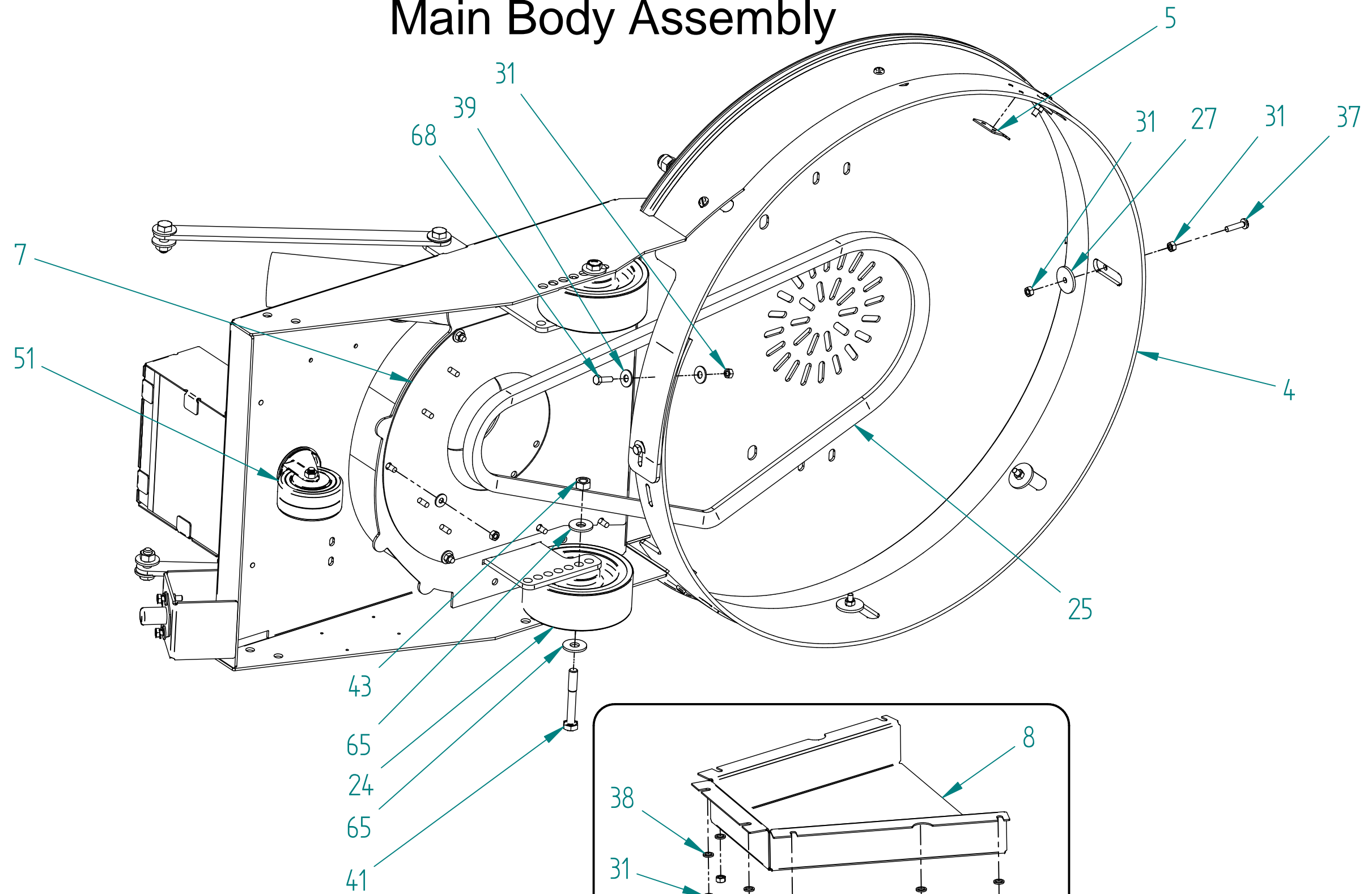
- **Polivac Warranty**

- When a warranty repair is justified, Polivac welcomes such repair by any of its authorized Service Centres. In most instances, the request for warranty brought to the attention of our service Divisions or Agents are handled in a prompt routine manner with no question of their validity. However, in some requests for warranty are received which are not justified. In these cases machine owners will be made aware that the premature failure of their equipment was the result of abuse, neglect or other cause not covered by Warranty.
- The Polivac warranty covers only DEFECTIVE MATERIAL and/or DEFECTIVE WORKMANSHIP. It does not cover labour.
- Your machine is warranted for 12 months from date of purchase by the original user against faulty workmanship or material. The warranty covers only the replacement, repair or adjustment of any part which in the opinion of Polivac fails as a result of a fault in manufacture assembly. Note 2 year warranty applies to drive motors and gearbox assemblies on electrical machines.
- In the case of Hire Companies or similar using the unit to rent on a casual basis then 3 months shall apply.
- This warranty does not cover service calls, travelling time, consumable parts, e.g. drive belts, chains, flexible skirt or hose, dust bags, mains leads, brushes, buffer, buffer strips, sanding discs, light bulbs, nozzles, filters, pressure pumps, piston seals, diaphragms and like items.
- In the case of proprietary components used by the manufacturer in his product, such as engines, electrical motors, chargers and the like Polivac will pass on any warranty given by the manufacture of these items.
- This warranty excludes batteries which are guaranteed for 90 days, by the manufactures from date of purchase of the equipment provided that the battery is kept filled to the proper level with distilled water and not abused.
- Accidental damage is not covered by warranty.
- Fair wear and tear is not covered by warranty.
- Only approved chemicals are to be used in the machine.
- All charges to and from the manufacturer, agent or service centre will be the responsibility of the owner.
- Repairs carried out by any other person other than an authorized Polivac repairer will cancel the warranty.
- A charge for traveling time and labour will be applicable for on-site warranty service.
- **POLIVAC WARRANTY IS SUBJECT TO THE LAWS AND REGU**

# 24G GAS Burnisher Main Body Assembly

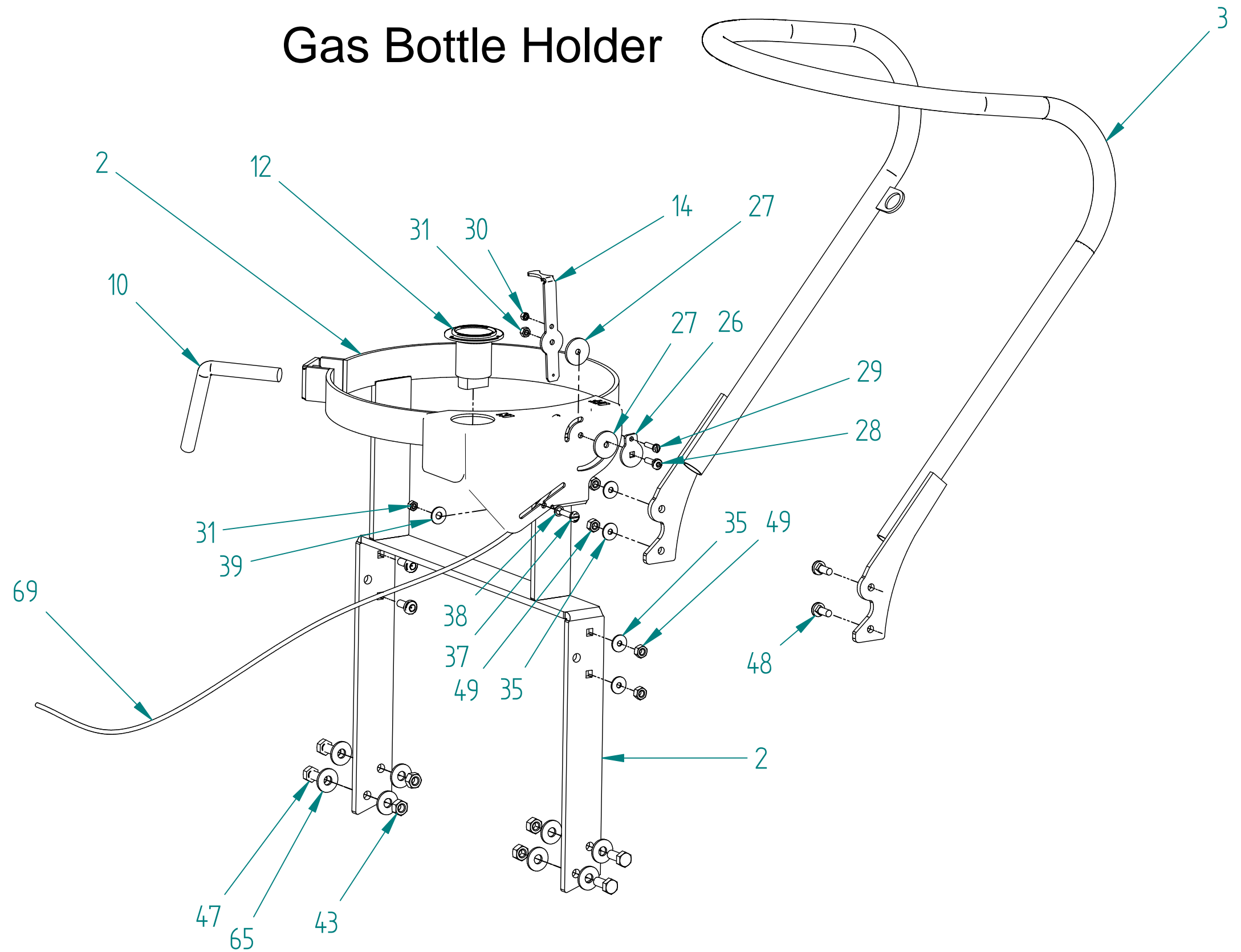


# 24G GAS Burnisher Main Body Assembly

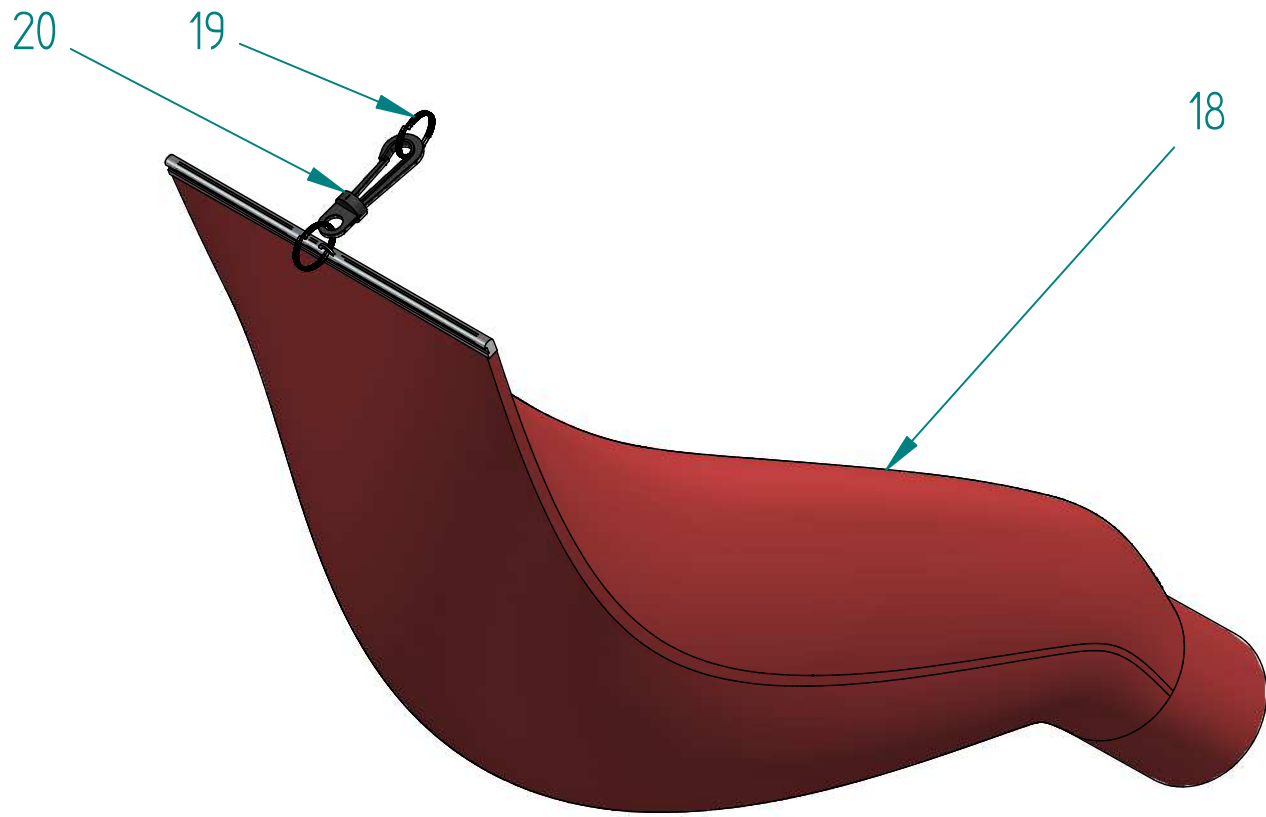


Vacuum Box

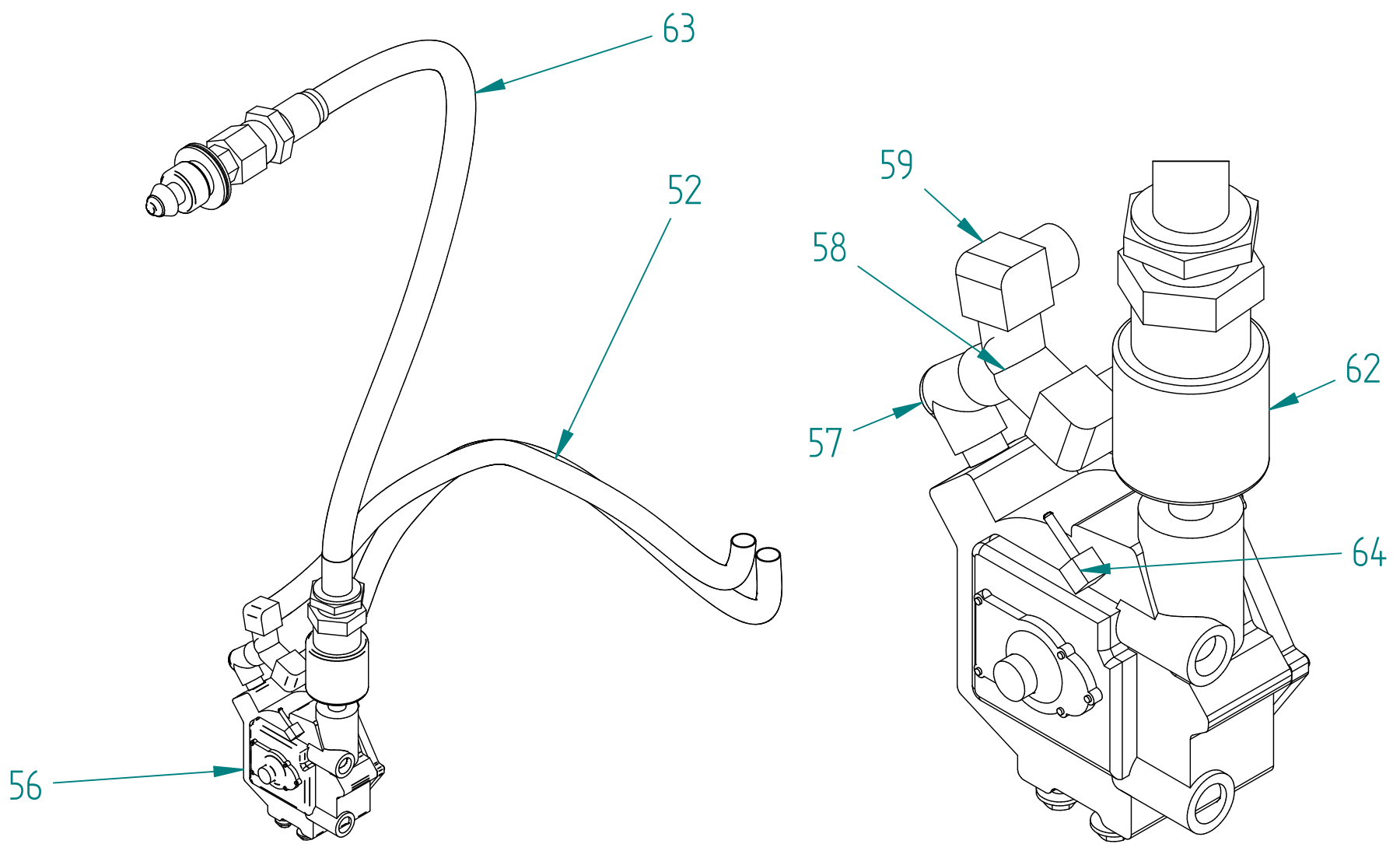
# 24G GAS Burnisher Gas Bottle Holder



# 24G GAS Burnisher



## Dust Bag



## Gas Regulator Assembly

## 24G GAS Burnisher

### Main Body & Gas Bottle Holder - Part List -Page 1 of 3

Item Number	Description	Part No.
1	Main Body	GS5007
2	Gas Bottle Bracket Assembly	GS5011
3	Handle	GS5012
4	24G Plastic Skirt	GS5006
5	Pad Trimmer	GS5020
6	Battery Bracket Strip	GS5021
7	Fan cover	GS5008
8	Fan Cover Box	GS5009
9	Gas Bottle Brase	GS5022
10	M16 Gas Bottle Lock Cam	GZ006/3291
11	Battery 12V 20AH	GSS013
12	Hour Meter 85003 (12V/60V)	GZ004/0962
13	Start Switch - G22 Dustmas	GZ004/0751
14	Throttle lever	GS5023
15*	Fan Plastic Assembly	Refer to 24G Fan Plastic Assembly drawings
16*	Brush and Pulley Assembly	Refer to 32G Brush and Pulley Assembly drawings
17*	Pulley Bracket Assembly	Refer to 24G Pulley Bracket Assembly drawings
18	Dust Bag	VPV063
19	Key Ring	VPV156
20	Swivel Hook Black	VPV120

## 24G GAS Burnisher

### Main Body & Gas Bottle Holder - Part List -Page 2 of 3

Item Number	Description	Part No.
21*	Engine Sub-Assembly	Refer to 24G Engine Sub-Assembly Parts drawings
22	20GB Honda Valve Protector	GS6017
23*	Belt Tensioner	Refer to 24G Belt Tensioner drawings
24	Blue Wheel	GS5004
25	Belt B59 or 6962	GZ003/0649
26	Throttle Lever Washer	GS5024
27	Nylon Washer M6x32	GZ006/2104
28	M6x25 Coach Bolt	GZ006/1929
29	M5x20 Pan Head	GZ006/1618
30	M5 Nyloc	GZ006/1704
31	M6 Nyloc	AAA354
33	M6x12 Flat Washer	GZ006/2093
34	M10x30 Hex Bolt	GZ006/2646
35	M8x20 Flat Washer.par	GZ006/2367
37	M6x25 Roof Bolt	GZ006/2017
38	M6x20 Flat Washer	GS6104
39	M6x25 Flat Washer.par	GZ006/2096
40	Bumpers Continental Trim	PPR002
41	M10x75 Set Screw	GS5111
42	M12x25 Flat Washer	GZ006/2992
43	M10 Nyloc	GZ006/2712
44	M10x25 Flat Washer	VIB507
45	M6x12 Set screw 4.6	GZ006/1901
46	M6 Spring Washer	GZ006/2098

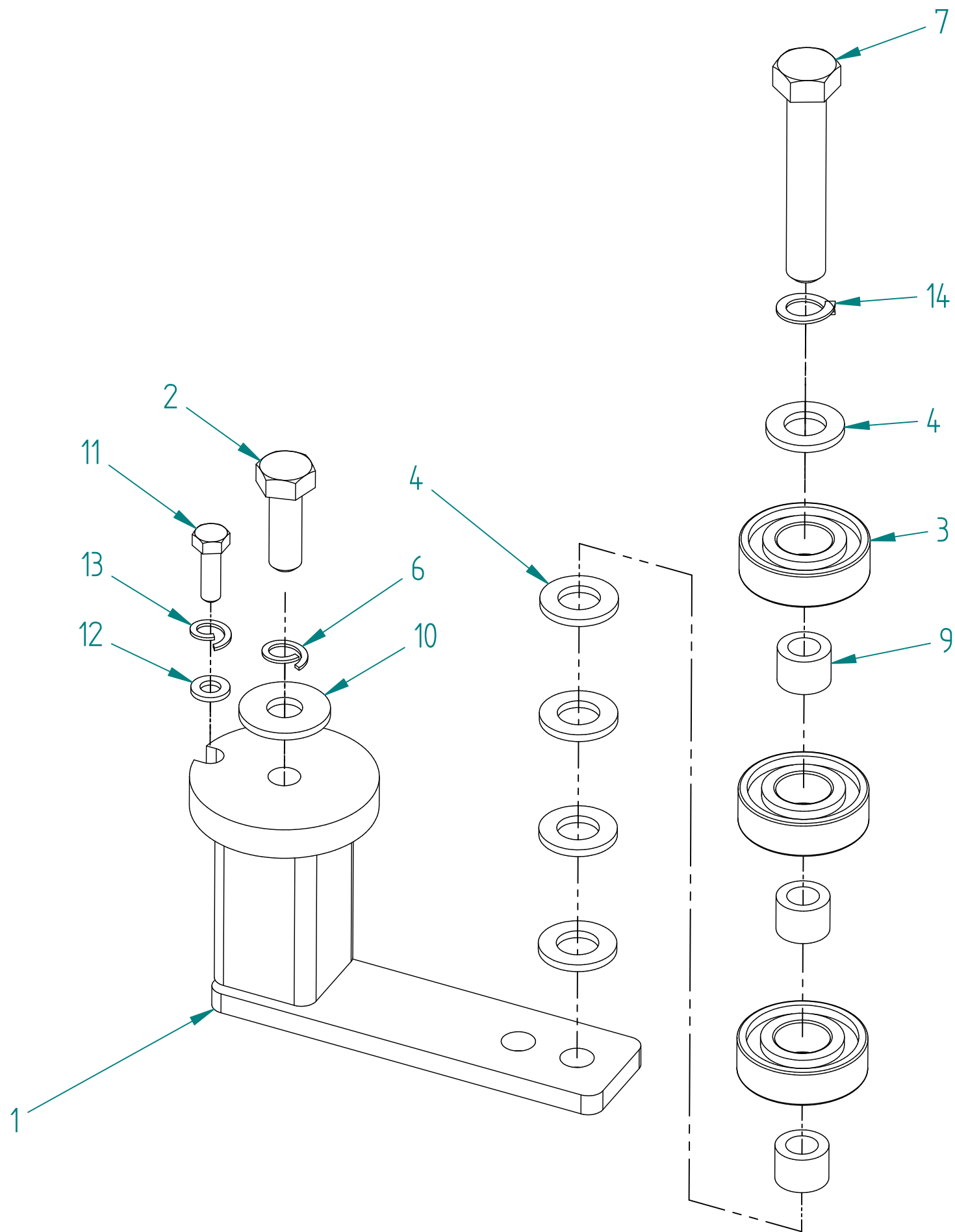
## 24G GAS Burnisher

### Main Body & Gas Bottle Holder - Part List -Page 3 of 3

<b>Item Number</b>	<b>Description</b>	<b>Part No.</b>
47	M10x30 Set Screw	GZ006/2646
48	M8x20 Coach Bolt	GZ006/2224
49	M8 Nyloc	PPR094
50	M6x20 Bolt Pan Head	GZ006/2001
51	J3 Swivel Castor	GS5014
52	LPG Gas Hose 3/8"	GSS002
54	M12 Nut	BAT295
55	M12 Nylon Threaded Rod 70mm	BAT296
56	Gas Regulator	GAS013
57	Elbow 3/8"M x 3/8"F BSPT	PPR061
58	3/8" BSPTM x 3/8" Y Brass	GSS047
59	Elbow 3/8" BSPTM x 1/2"Hose Tail	GAS035
62	Filter Lock	GGs022
63	Gas Bottle Hose 24.5 x 1/4"	STR027
64	Elbow 1/8" BSPT M x 3/16" Hose Tail	GAS034
65	M10x25 Flat Washer	VIB507
66	M12 Dome Nut	GS5112
67	M10x25 SHCS	GS5110
68	M6x20 4.60Hex Bolt	GZ006/1903
69	Throttle Cable	GGs004
70	M6x16 Flat Washer	GZ006/2094



# 24G GAS Burnisher Belt Tensioner

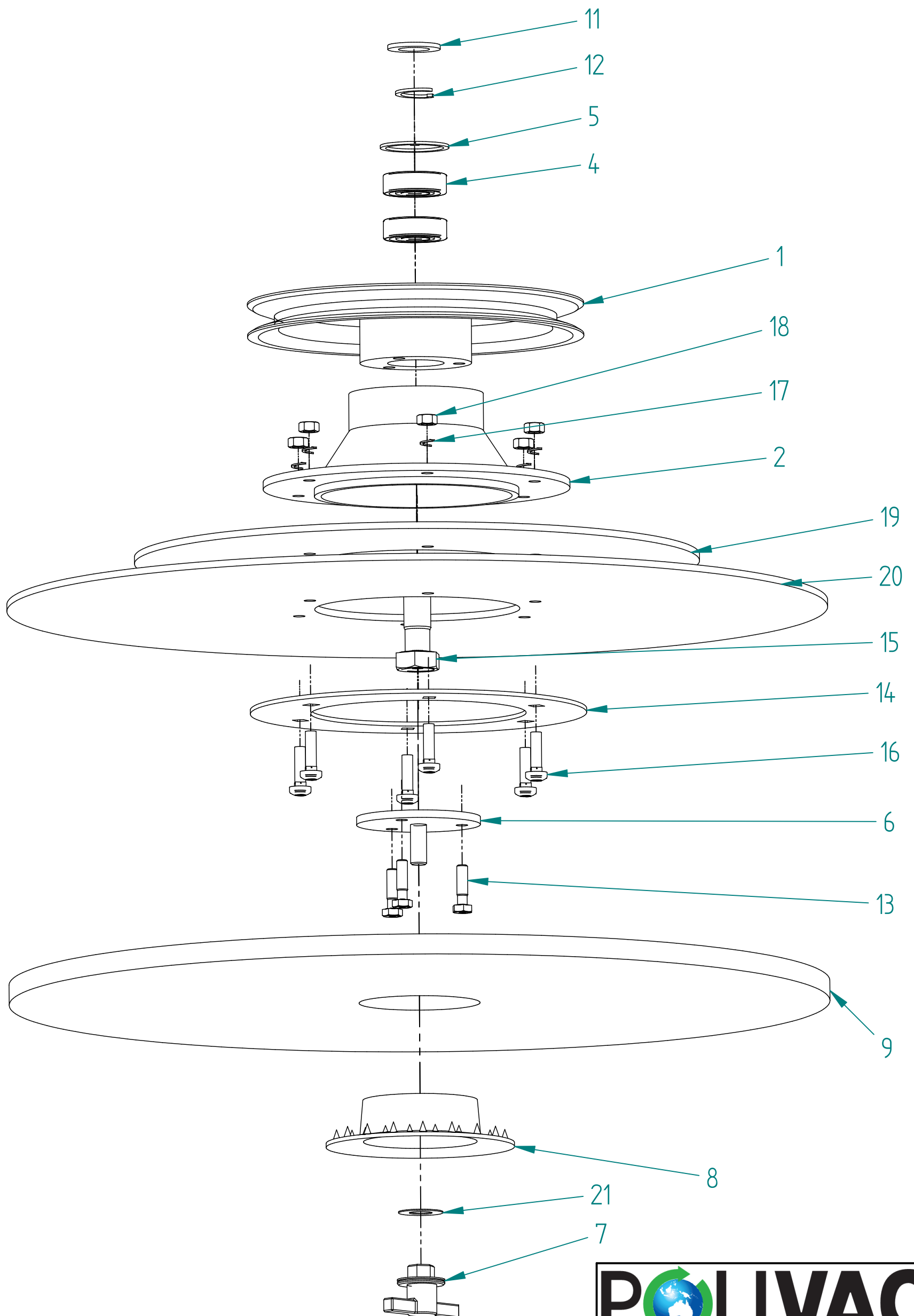


# 24G GAS Burnisher Belt Tensioner

<b>Item Number</b>	<b>Description</b>	<b>Part No.</b>
1	Belt Tensioner Large	GGs016
2	M10x30 Hex Bolt	GZ006/2646
3	Bearing 6203 2 RS	VPA570
4	M12x25 Flat Washer	GZ006/2992
6	M10 Spring Washer	GZ006/2721
7	M12x75 Hex Bolt	BAT268
9	Bearing Sleeve	GSS032
10	M10x25 Flat Washer	VIB507
11	M6x20 Set Screw	GZ006/1903
12	M6x16 Flat Washer	GZ006/2094
13	M6 Spring Washer	GZ006/2098
14	M12 Spring Washer	GAS054

# 24G GAS Burnisher

## Brush Pulley Assembly



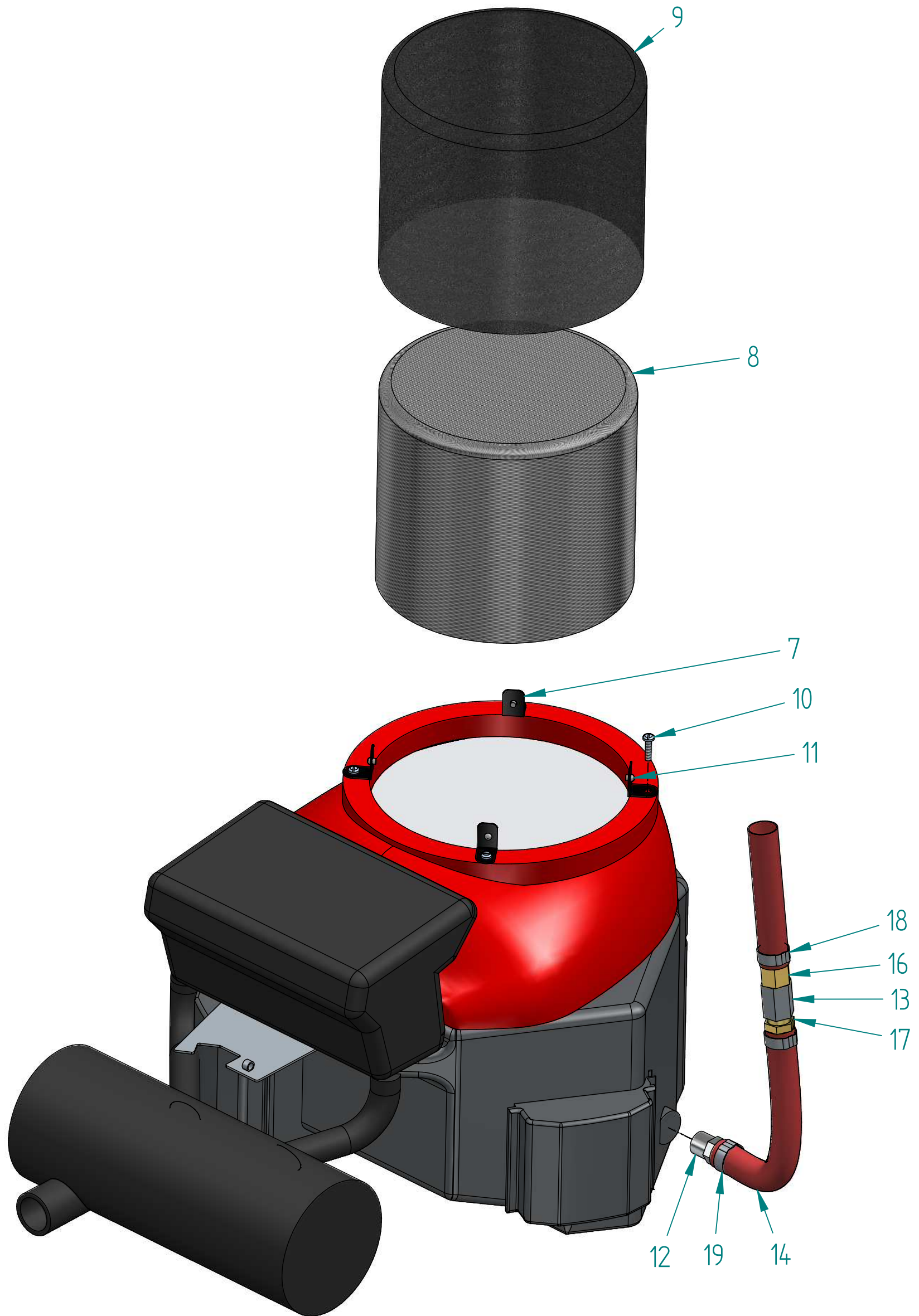
## 24G GAS Burnisher

### Brush Pulley Assembly Part List

<b>Item Number</b>	<b>Description</b>	<b>Part No.</b>
1	Pulley Brush 22, 32, 42	GZ010/3064
2	Aluminium Clutch	GZ010/3073
4	Bearing 6204 DDU	VPV230
5	Circlip Internal 47mm	Gas031A
6	Pad Holder Retainer	GZ010/3071
7	Hand Tee Knob	GZ010/3074
8	Plastic Spicked Padlock	GZ010/3083
9	Pad 52 CM	P50Jackaro
11	M20x45x3.5 ZP Flat Washer	AAG480
12	M20 Spring Washer	GZ006/3562
13	M8x25 Set screw 8.8	GZ006/2223
14	Pad Holder Backing Plate	GZ010/3076
15	M20x50 ZP Hex	GS6109
16	M8x30 Coach Bolt	GZ006/2233
17	M8 Spring Washer	GZ006/2372
18	M8 Nut ZP	GZ006/2363
19	24 Inch Pad Holder Backing Plastic	GS5013
20	24 Inch Pad Holder	GS4001
21	Teflon Washer 33x17	GZ010/1038

# 24G GAS Burnisher

## Engine Sub-Assembly Parts

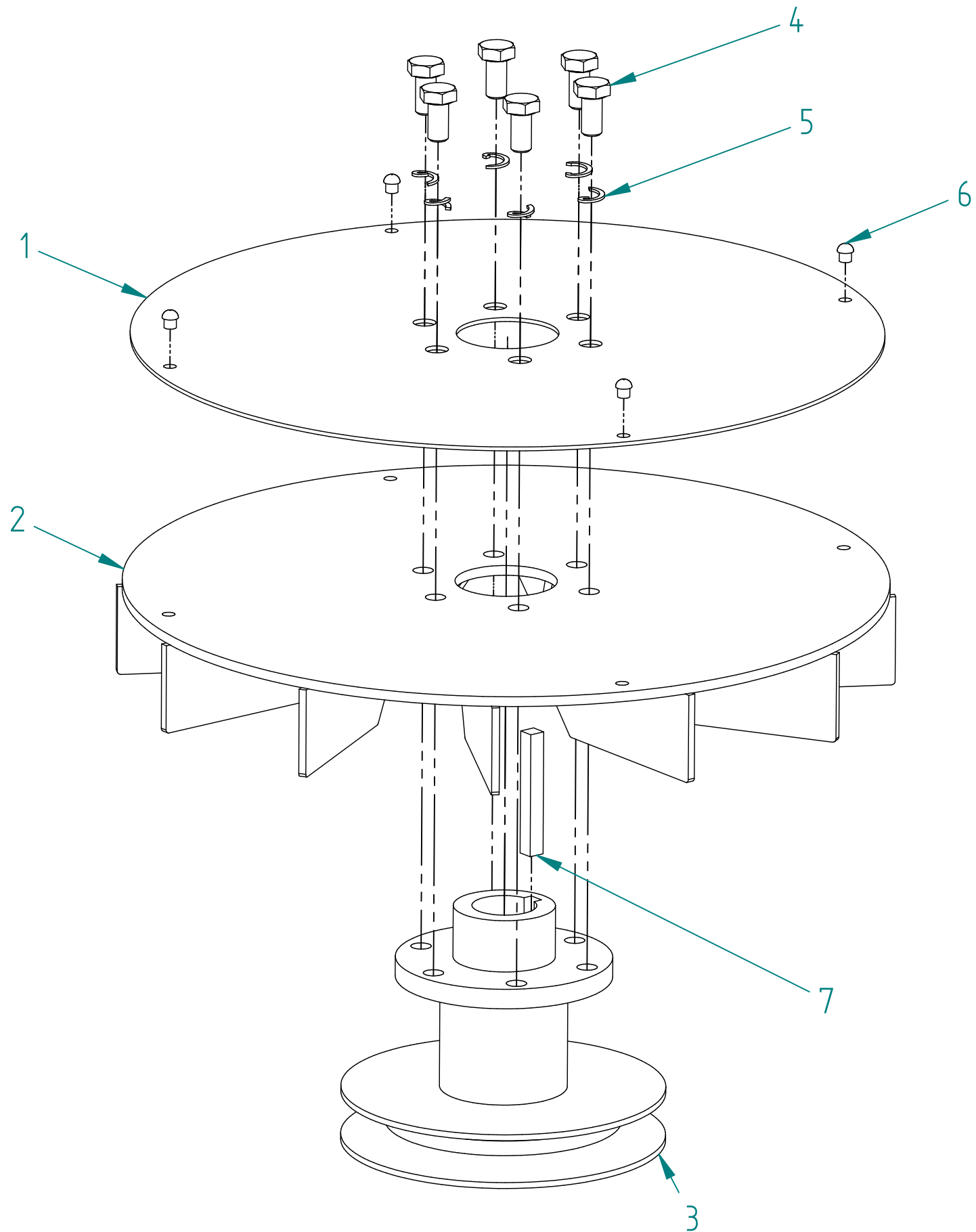


## 24G GAS Burnisher

### Engine Sub-Assembly Parts

<b>Item Number</b>	<b>Description</b>	<b>Part No.</b>
7	Cowl Angle Bracket	GGs031BS
8	Screen Metal Basket	GSS031BS
9	Engine Dust Filter	GSS028BS
10	M5x20 Pan Head	GZ006/1618
11	Rivet AS 6-4	AAK 829
12	Drain Plug 20mm x 1.5	GSS066
13	Valve Drain	GSS068
14	Oil Drain Hose	PPR039A
16	1/4"Fx3/8"Hose Tail Brass	GSS073
17	1/4"Mx3/8" Hose Tail Brass	PPR051
18	18mm Hose Clamp	GSS079
19	Hose Clamp 13-20mm	PPR042

# 24G GAS Burnisher Fan Plastic Assembly



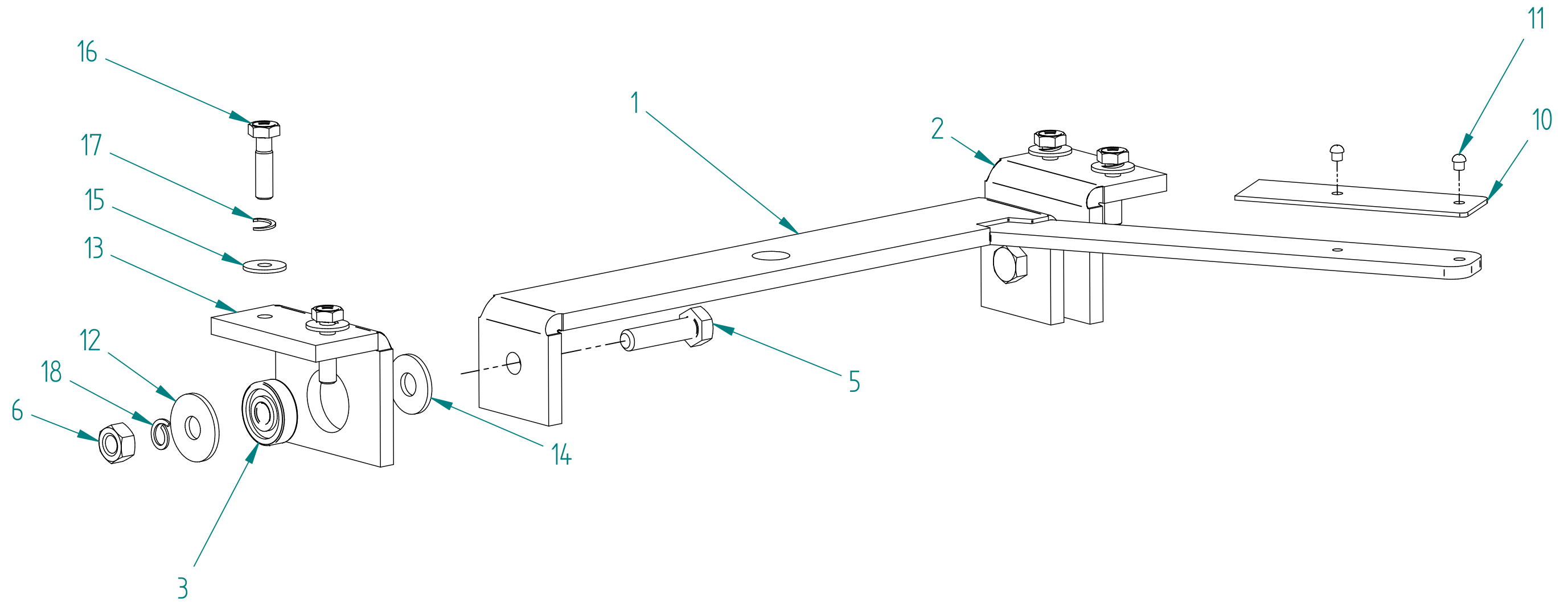
# 24G GAS Burnisher

## Fan Plastic Assembly

<b>Item Number</b>	<b>Description</b>	<b>Part No.</b>
1	Fan Suport Washer	GZ010/3047
2	Fan Plastic	GZ010/0856
3	Engine Pulley and Fan Boss Unit	GS5002
4	M8x16 Set screw ZP	GZ006/2221
5	M8 Spring Washer	GZ006/2372
6	Rivet AS 6-4	AAK 829
7	1/4 x 2 1/4 Key Steel	GAS089



# 24G GAS Burnisher Pulley Bracket Assembly



# 24G GAS Burnisher

## Pulley Bracket Assembly

<b>Item Number</b>	<b>Description</b>	<b>Part No.</b>
1	Brush Pulley Bracket	GS5025
2	Angle High	GS5017
3	Bearing 6200 2RS	SLB016
5	M10x40 Hex Bolt	GZ006/2536
6	M10 Nut	GZ006/2711
10	Polyurethane Buffer	GZ001/5115
11	Rivet AS 6-4	AAK 829
12	M10x32 Flat Washer	BAT270
13	Angle Low	GS5018
14	M10x25 Flat Washer	VIB507
15	M8x20 Flat Washer.par	GZ006/2367
16	M8x25 Set screw 8.8	GZ006/2223
17	M8 Spring Washer	GZ006/2372
18	M10 Spring Washer	GZ006/2721